







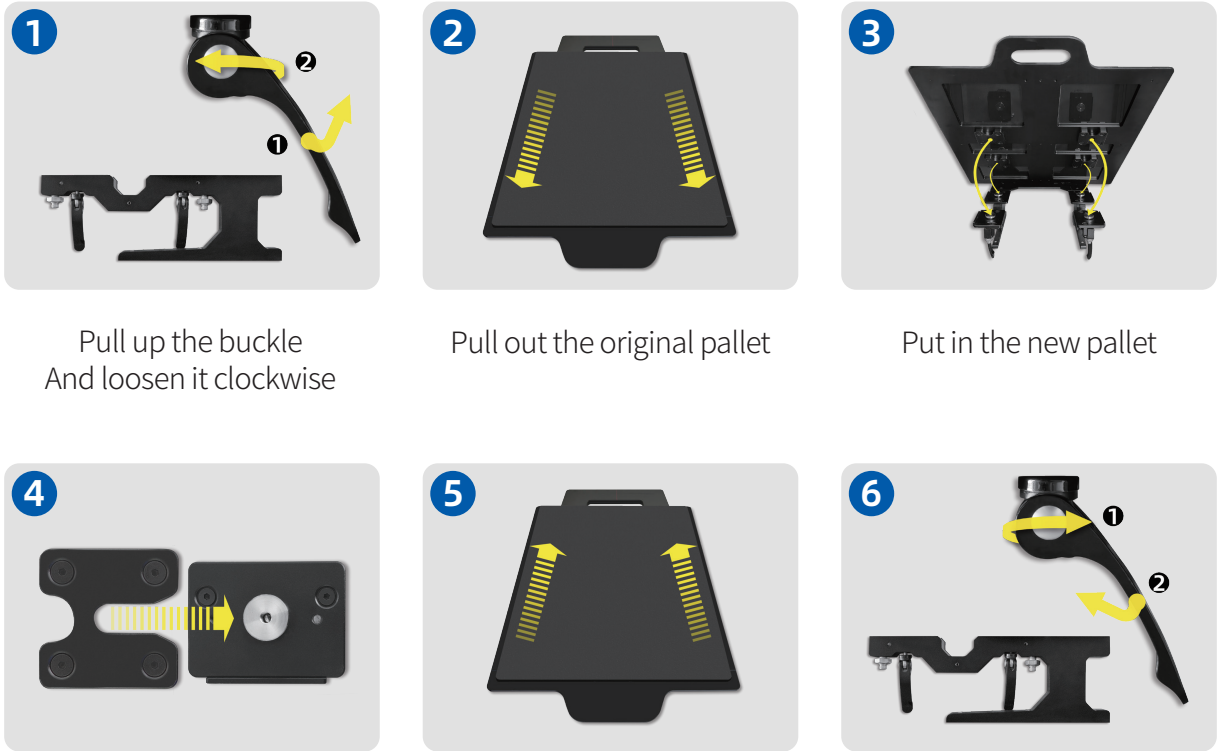
DTG-Series Pallet selection

Supports customization of special platens
With quick replacement in 3 seconds.
It can meet the printing needs of different parts of garments on the market.

PLATEN TYPE	IMAGE	SIZE	APPLICATION
Standard Pallet		Pallet size: 400*500(mm) Print size: 380*480(mm)	Compatible garments: cut pieces, T-shirts, hoodies, denim clothes, POLO shirts, sweatshirts, canvas bags
Streetwear brand Pallet		Pallet size: 500*600(mm) Print size: 480*580(mm)	Compatible clothing: cut pieces, T-shirts, hoodies, denim clothes, POLO shirts, sweatshirts, plus-size T-shirts, trendy brand T-shirts, loose hoodies, canvas bags
Children's clothing Pallet		Pallet size: 300*400(mm) Print size: 280*380(mm)	Compatible clothing: cut pieces, T-shirts, hoodies, denim clothes, polo shirts, sweatshirts, women's clothing, children's clothing, canvas bags
Sleeve Pallet		Pallet size: 140*420(mm) Print size: 130*400(mm)	Compatible clothing: small parts of clothing, long pants, shorts, skirts, sleeves, baby clothes
Pants Pallet		Pallet size: 200(130)*600(mm) Print size: 180(120)*580(mm)	Compatible clothing: long pants, shorts, sleeves
Ready-to-wear Pallet		Pallet size: 800(845)*655(mm) Print size: 440*580(mm)	Compatible clothing: T-shirts, POLO shirts, hoodies, denim clothes, knitted sweaters

DTG--Series Pallet Replacement Diagram

3 second refresh
Easy replacement of the printing platen



Pull up the buckle
And loosen it clockwise

Pull out the original pallet

Put in the new pallet

Align with the card slot

Push in to lock tightly

Tighten counterclockwise
Then press down firmly